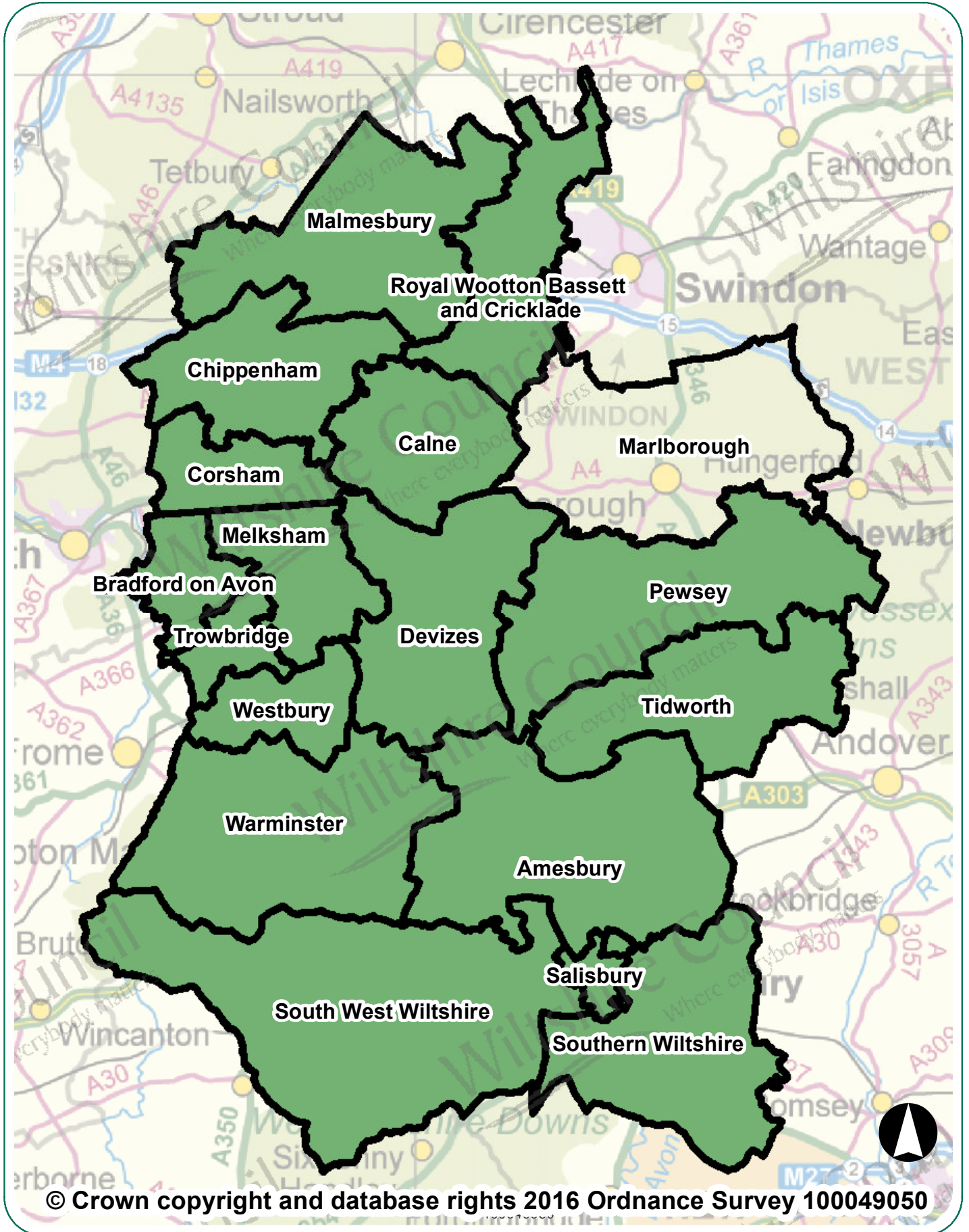


# Marlborough Area Board Highway Information



# Marlborough Area Board Highway Information

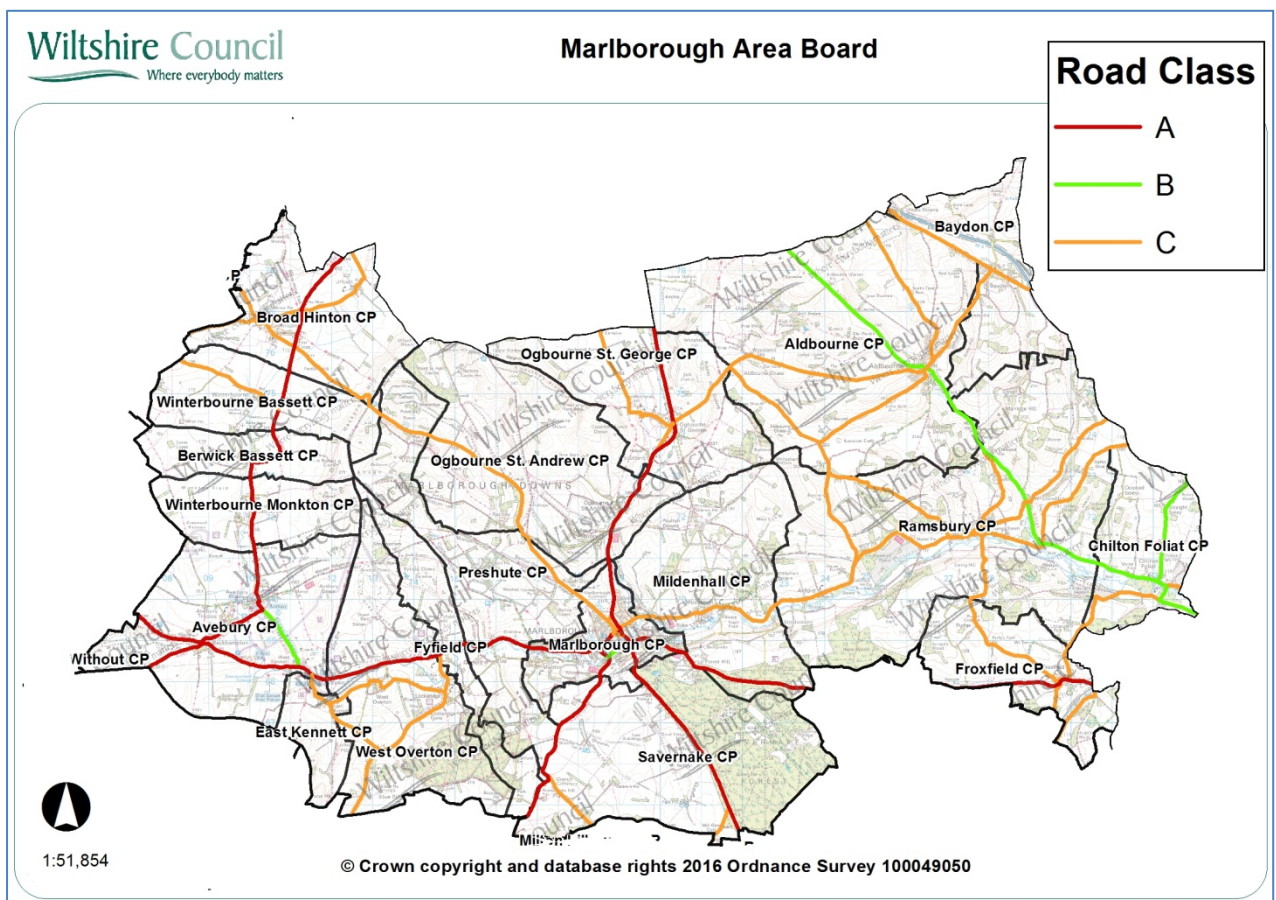
## Introduction

This document summarises highway information for your area board. It lists the recent highway and related work carried out by Wiltshire Council, including the road resurfacing carried out during the first two years of the 'Local Highways Investment Fund 2014 – 2020', and includes other information which should be of interest.

Further information on the Council's activities is available at the website [www.wiltshire.gov.uk](http://www.wiltshire.gov.uk). If you wish to report a specific highway issue please use My Wiltshire. Details are provided at the end of this document.

## Parishes in the community area are:

Broad Hinton, Winterbourne Bassett, Berwick Bassett, East Kennet, West Overton, Fyfield, Avebury, Preshute, Ogbourne St Andrew, Savernake, Mildenhall, Marlborough, Ogbourne St George, Aldbourne, Baydon, Ramsbury, Chilton Foliat, Winterbourne Monkton, Froxfield



## Network statistics in your area

### Road length by class

Road type	Urban (km)	Rural (km)
A Class Roads	7.25	48.09
B Class Roads	2.76	17.12
C Class Roads	20.12	89.90
Unclassified Roads	38.96	83.88
<b>Total</b>	<b>69.09</b>	<b>238.99</b>
	<b>Overall Total</b>	<b>308.08</b>

The council categorises its roads to reflect their importance. This enables an effective assignment of highway inspection frequencies and maintenance standards.

### Highway assets in your area

The council keeps an inventory of its highway assets in order to assist planning its highway maintenance. Important statistics relating to your board area are:

Asset Type	Measure
Carriageway	308.08 km
Footways adjacent to road	92 km
Footways (linked)	10.16 km
White road centre lines	129 km
Road kerbs	135 km
Grass verge (maintained)	530 km
Drainage grips	2, 377 number
Drainage pipe grips	212 number
Drainage gullies	3,706 number
Road signs	2, 102 number
Street lights	1, 470 number

## **Major highway maintenance**

### **Road resurfacing**

Wiltshire has over 3,000 miles of road. The Council's 'Local Highways Investment Fund 2014 – 2020' is making a massive investment to improve the condition of the roads in Wiltshire over six years. The programme of work started in April 2014, and is designed and supervised by the Council's consultants Atkins, with the work carried out by our main highway contractors Tarmac and Eurovia.

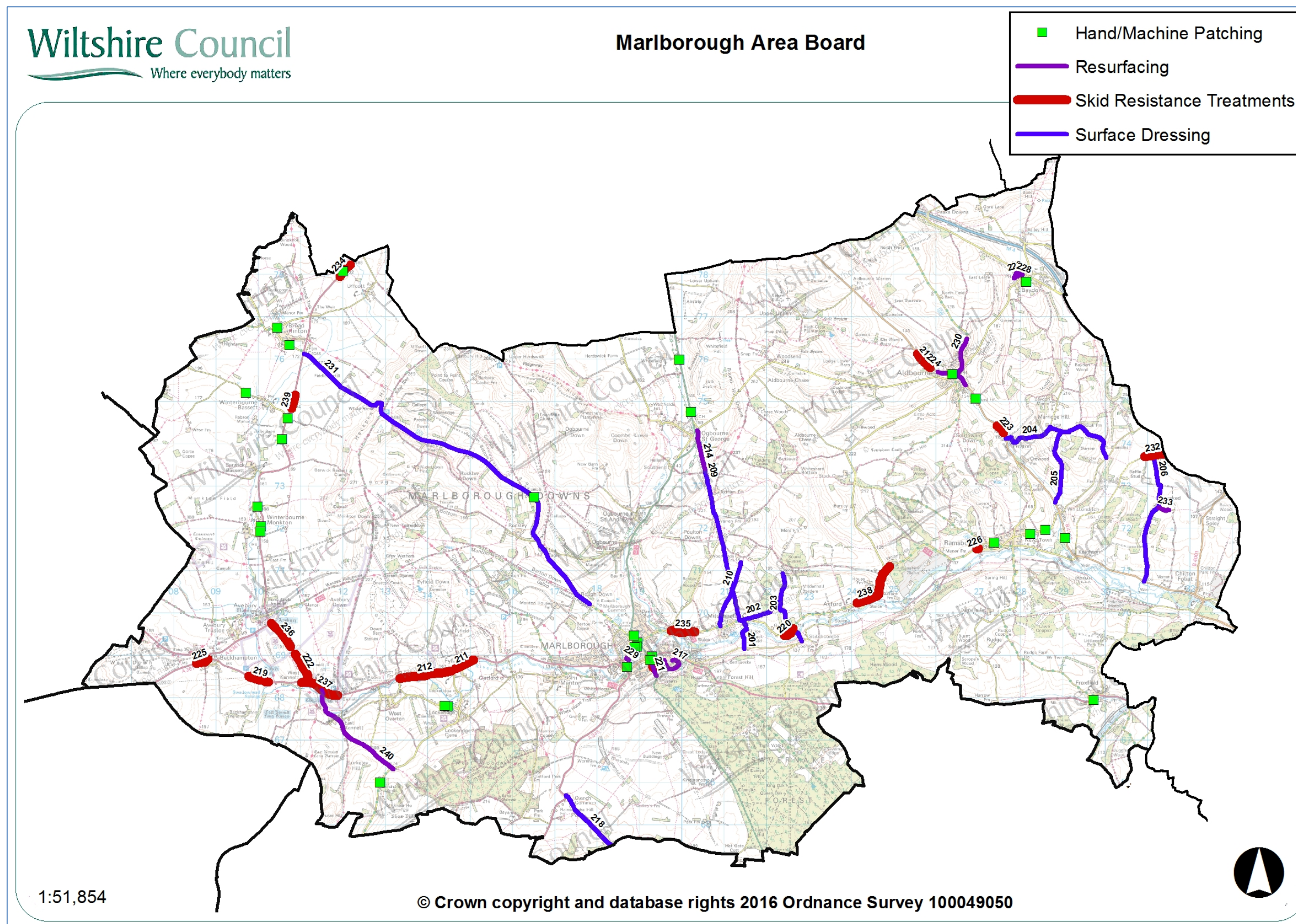
The work carried out in the first two years of the programme has improved a considerable number of the roads in previously poor condition. The locations of sites treated in recent years are shown below.

### **Carriageway repairs**

As well as resurfacing roads other works are undertaken to make localised repairs to keep the roads safe. The works undertaken in your area since 2014 are shown on the map below.

The wet winter and flooding in previous years has resulted in substantial damage to the road network. It is important that serious defects are treated promptly to keep the roads safe. The Council currently operates four Pothole teams that respond to urgent issues to keep the roads safe.

Plan showing major maintenance schemes & hand/machine patching sites completed since 2014



**Major maintenance completed since 2014**

No	Location	Works
201	C6 Ramsbury Road south to Chopping Knife Lane, Mildenhall	Surface Dressing
202	C6 Ramsbury Road east and north to Upper Thicket Copse	Surface Dressing
203	sound Copse Lane south from Thicketts Road	Surface Dressing
204	Witcha Lane, Ramsbury	Surface Dressing
205	Shell Wood Lane, Whittonditch	Surface Dressing
206	Whittonditch crossroads road north of crossroads up Marrison hill to Balak	Surface Dressing
207	Rudge Lane	Surface Dressing
208	High Street Little Bedwyn through Bagshot	Surface Dressing
209	C6 Ramsbury Road north to end of highway and then north to Old Chase Road	Surface Dressing
210	Woodlands Road	Surface Dressing
211	A4 at Fyfield Farm, Marlborough	Skid Resistance Improvements
212	A4 west of Fyfield	Skid Resistance Improvements
213	B4192, Aldbourne	Skid Resistance Improvements
214	Bytham Road, Ogbourne St. George	Resurfacing
215	Downsmead, Marlborough	Resurfacing
216	Figgins Lane, Marlborough	Resurfacing
217	Five Stiles Road, Marlborough	Resurfacing
218	Unnamed Road (Clench Common south east C265 to junction with Burbage Road B3087)	Surface Dressing
219	Beckhampton Roundabout To B4003 (To Avebury)	Skid Resistance Improvements
220	30mph Mildenhall to Uc Stichcombe Farm	Skid Resistance Improvements
221	Entrance to depot to A4 London Road Mini-roundabout	Skid Resistance Improvements
222	B4003 North of A4 Junction, West Kennett	Skid Resistance Improvements
223	30mph Aldbourne to Witcha Lane	Skid Resistance Improvements

*Marlborough Area Board Highway Information*

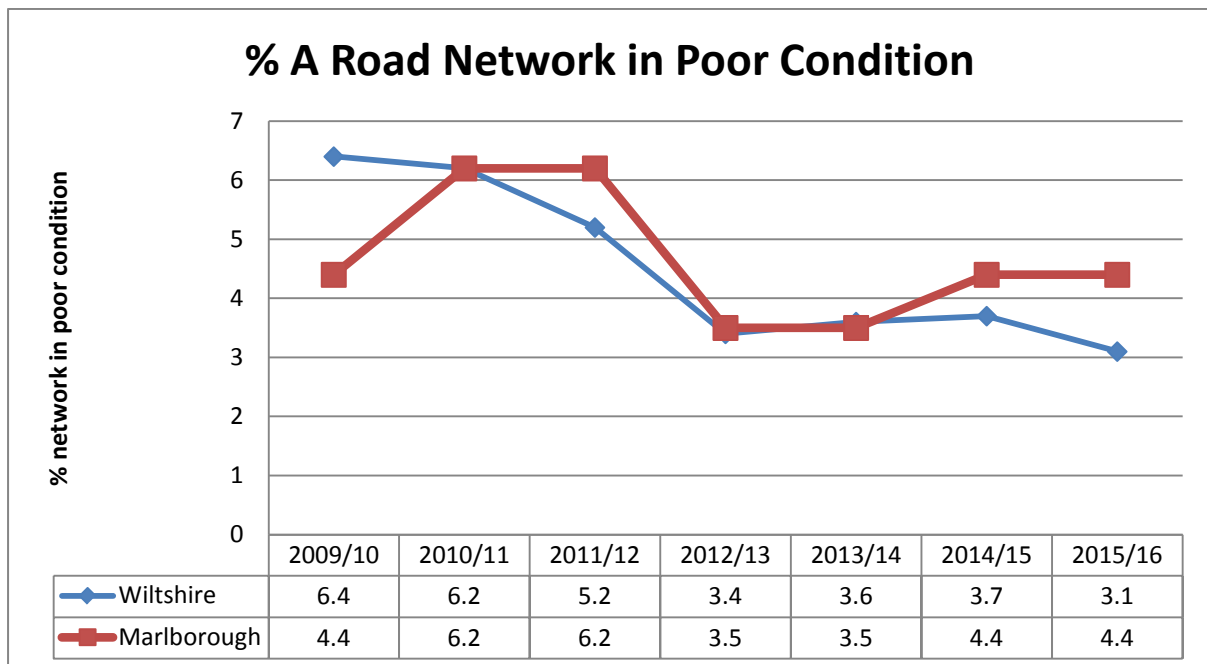
<b>No</b>	<b>Location</b>	<b>Works</b>
224	Track To Upper Upham to 30mph Aldbourne	Skid Resistance Improvements
225	Entrance To The Firs To Beckhampton Roundabout	Skid Resistance Improvements
226	Entrance Manor Farm To 30mph Limit Ramsbury	Skid Resistance Improvements
227	A346 Salisbury Road - Marlborough	Resurfacing
228	Downsmead, Baydon	Resurfacing
229	Figgins Lane, Marlborough	Resurfacing
230	B4192 West Street, South Street & Lottage Road, Aldbourne	Resurfacing
231	Marlborough - C18 Marlborough to Broad Hinton	Surface Dressing
232	Entrance Eastridge Farm To County Boundary	Skid Resistance Improvements
233	East Soley, Ramsbury	Resurfacing
234	A4361 at Swindon Boundary, Broad Hinton	Skid Resistance Improvements
235	At Poulton Farm, Marlborough	Skid Resistance Improvements
236	B4003 Southeast of Beckhampton Road, Avebury	Skid Resistance Improvements
237	A4 East of Junction with B4003 West Kennet	Skid Resistance Improvements
238	Ramsbury Road, Axford near House Farm	Skid Resistance Improvements
239	A4361 at Junction with High Street, Winterbourne Bassett	Skid Resistance Improvements
240	East Kennett - A4 to Alton Barnes road	Resurfacing

## Highway conditions and technical surveys in your area

Roads deteriorate in condition because of various factors, including traffic volumes, ground conditions, and weather and drainage issues. Technical surveys of the condition of the highway network are carried out annually and the information is used to help prioritise schemes. Road safety is the priority, and maintaining adequate skid resistance on the busy high speed roads is vital.

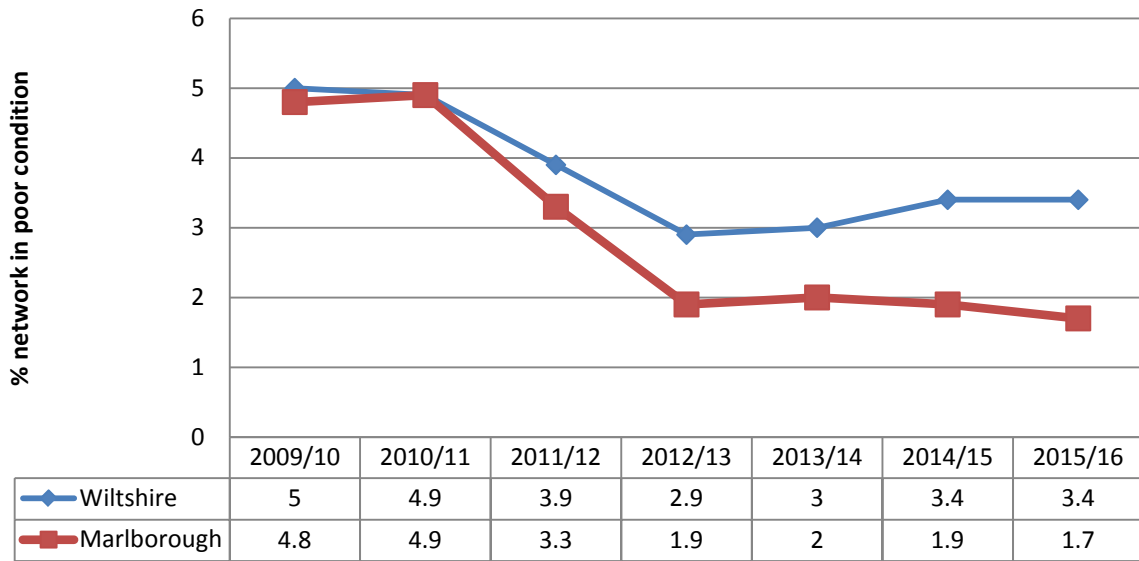
The surveys include the use of a vehicle equipped with lasers and cameras to record road surface condition, which allows us to report on road conditions to the Department for Transport and to prioritise maintenance work. Other surveys include measuring skid resistance on the busier roads.

The road conditions in your area are shown below. It should be noted that low numbers are good because it indicates that less road length should be considered for treatment. More detailed information is shown in Appendix A.

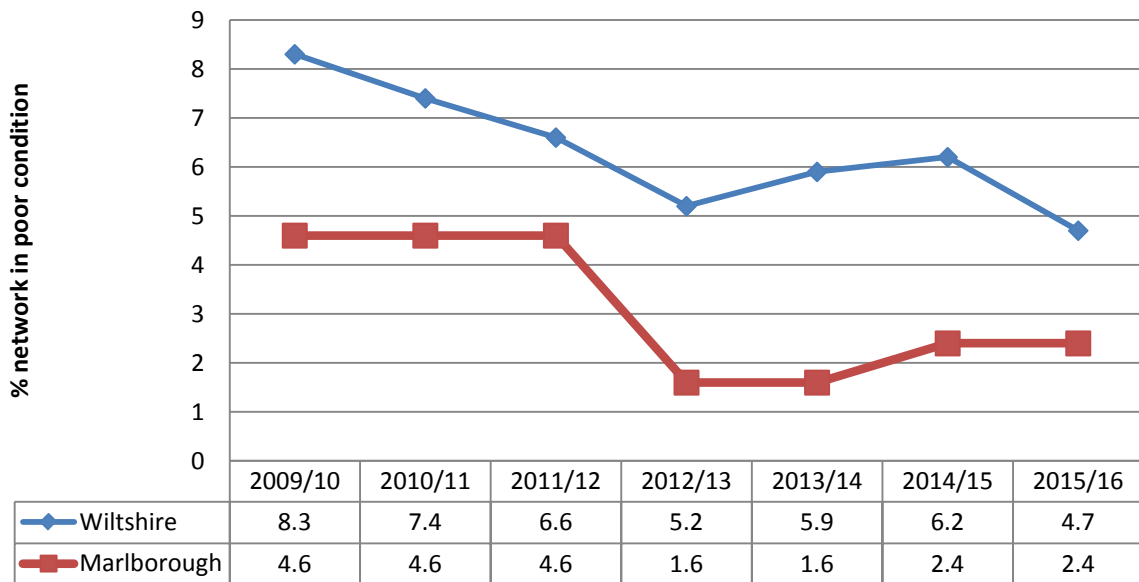


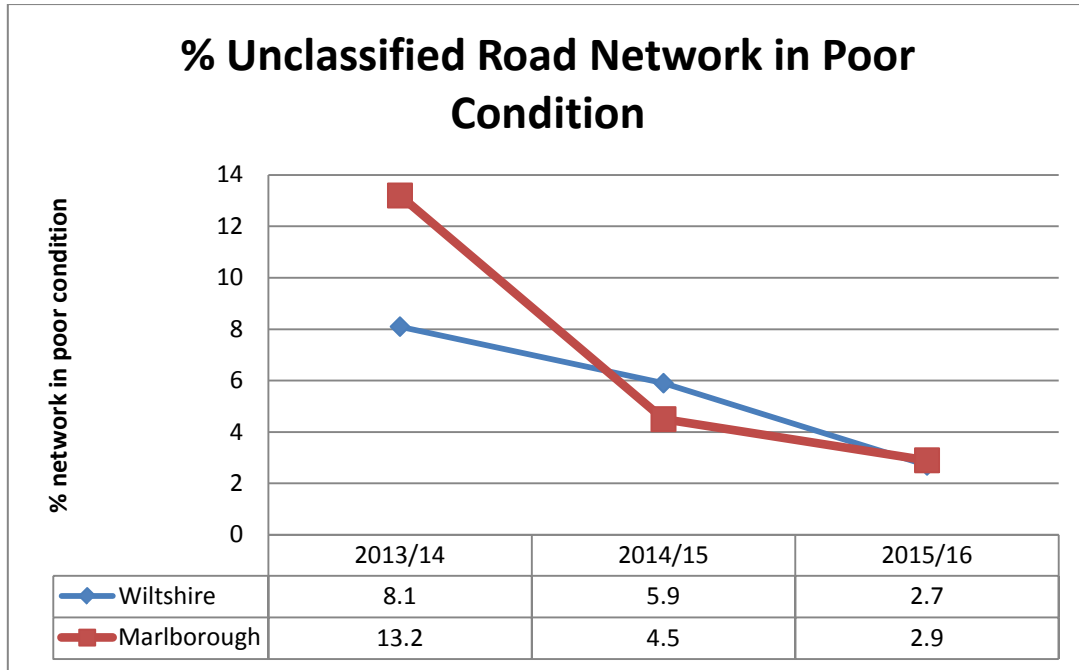


### % B Road Network in Poor Condition



### % C Road Network in Poor Condition





## Integrated transport, bridge and drainage works

### Integrated transport

The Council's traffic engineering team work with our contractors to plan and deliver a range of projects to the local community, most notably through the Area Boards and Community Area Transport Groups (CATGs). The schemes range in size and complexity from simple sign installation through to more complex road safety and improvement schemes.

### Bridges

The Council regularly inspects its bridges and other highway structures. There is a programme of renewal and refurbishment works to keep them in good condition, as well as having to respond to damage caused by collisions.

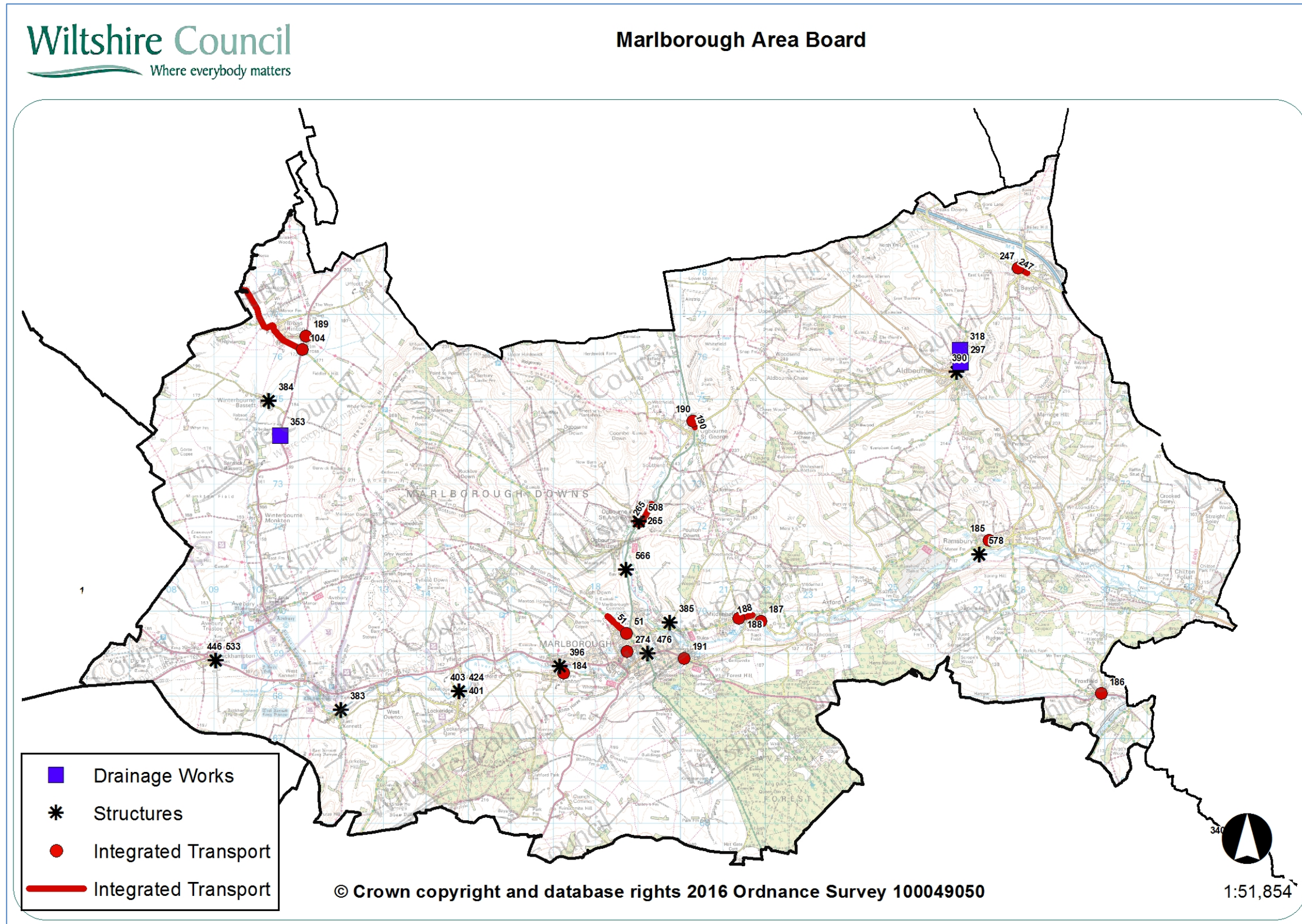
### Drainage

Programmes of drainage investigations, repairs and flood alleviation schemes are undertaken throughout the year, but the flooding in recent years has meant that there has been a need to respond immediately to flooding issues, as well as dealing with previously identified problem sites. The drainage improvement and flood alleviation work is co-ordinated through the Council's Operational Flood Working Groups that include the Environment Agency, Wessex Water, other organisations and stakeholders.

### Recent work in your area

The Integrated Transport, Bridge and Drainage schemes carried out in your area since 2015 are listed below.

Plan showing completed integrated transport, bridge and drainage schemes since 2015



**Integrated transport schemes since 2015**

No	Location	Description
184	Manton Junction of High St /Bridge St	Footway improvements
185	Ramsbury Back Lane	20mph speed limit implementation
186	Froxfield	Footway and lighting
187	Mildenhall	Mildenhall Gates at eastern end of village
188	Mildenhall Thicketts Road	Warning signs for playground
189	A4361 Broad Hinton	Bus stop kerbs by Barbury Inn
190	Ogborne St George	Slip road on carriageway footway
191	A4 East of Marlborough	Deer warning signs
247	C146 Ermin Street Baydon	Safety Audit
265	Ogbourne St Andrew	Village Lane 20mph speed limit implementation
274	Marlborough	Marlborough Parking Review (including High St N) - road markings only
51	C18 Marlborough	Frees Avenue speed limit
104	C415	Speed limit implementations C415

**Bridge schemes since 2014**

No	Location	Description
566	Ogbourne St Andrew	Vegetation, masonry, pot-holes, parapets clean / paint
578	Ramsbury	Abutment Repair
383	West Overton (see Fyfield)	East kennet Bridge, Weld parapet
384	Winterbourne Bassett (see Broad Hinton)	Winterbourne Bassett re-deck
385	Marlborough	Rabley Lane ex rail bridge, erect additional fencing inside existing parapets
390	Aldbourn	Albourn Pond Culvert, Straighten and repair parapet
396	Marlborough	Manton North and South Bridge, replace parapet posts
401	Fyfield & West Overton	Lockeridge Bridge
403	Fyfield & West Overton	Trial Hole Lockeridge Bridge
424	Fyfield & West Overton	Lockeridge Bridge
446	Avebury	Galteemore Culvert Vegetation Clearance
476	Marlborough	Marlborough Town – re-pointing, vegetation clearance
508	Ogbourne St Andrew	Ogbourne St Andrew - parapet repair

**Drainage works since 2015**

No	Location	Description
297	Marlborough	EA funded joint scheme for new culverts
318	Marlborough	Culvert reconstruction
353	Marlborough	Replacement of collapsed culvert

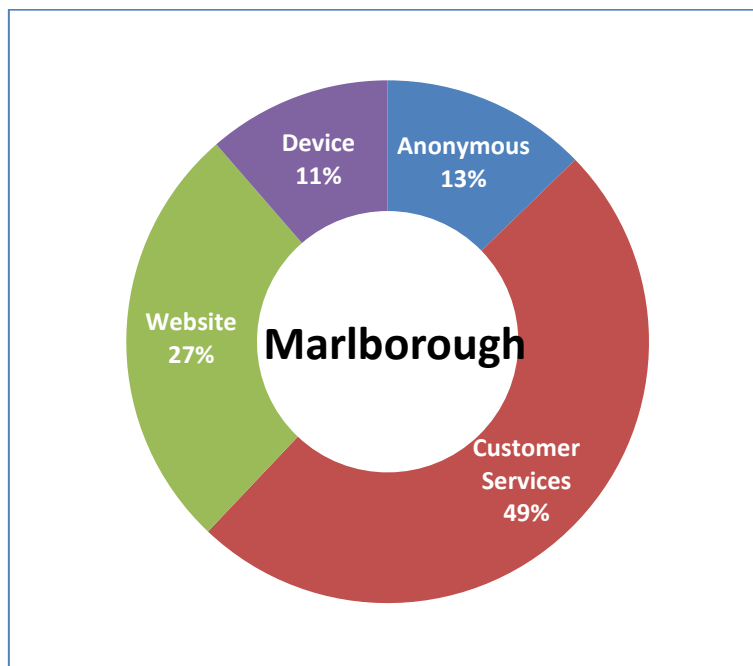
## My Wiltshire



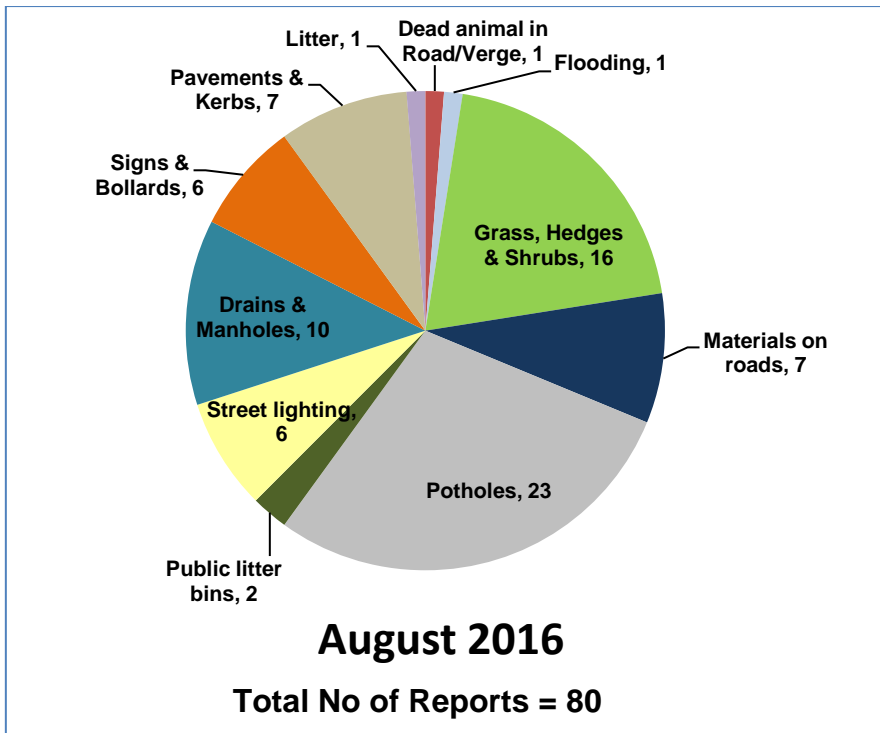
My Wiltshire provides an easy way to report highway issues, including using the Council's website. We have an app so you can report on the go using your smartphone. The My Wiltshire app is available to download at both the [App Store](#) (for iPhones and iPads), from [Google Play](#)<sup>™</sup> (for Android phones) and Windows Store. You can attach information such as photos or videos and pinpoint the location of your report using the mapping software on your phone.

A summary of recent reports in your area is shown below, and further details are shown in Appendix B.

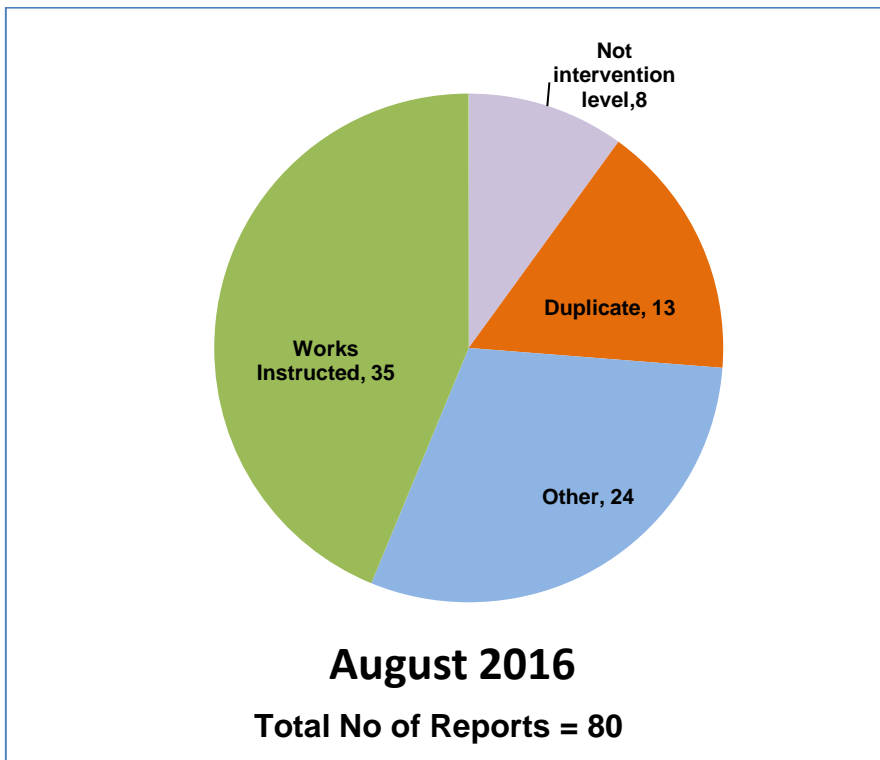
### Customer reporting methods in your area



### Customer reports in your area for the month of August 2016



### Actions following recent reports in your area

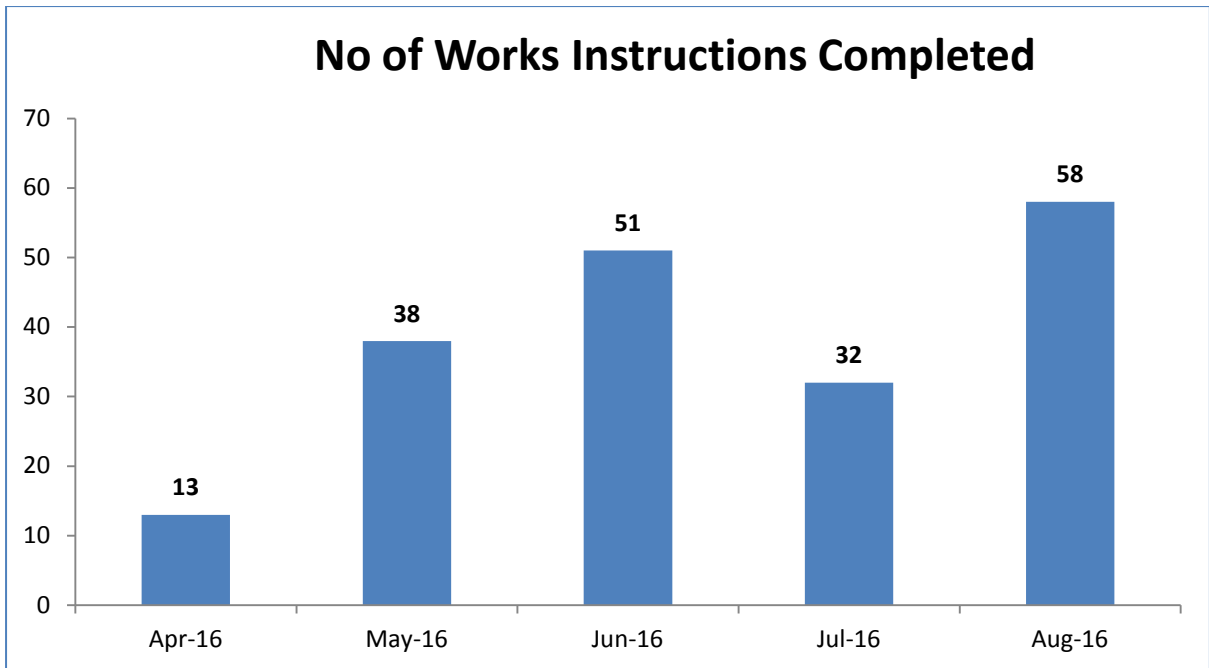


## Action definitions

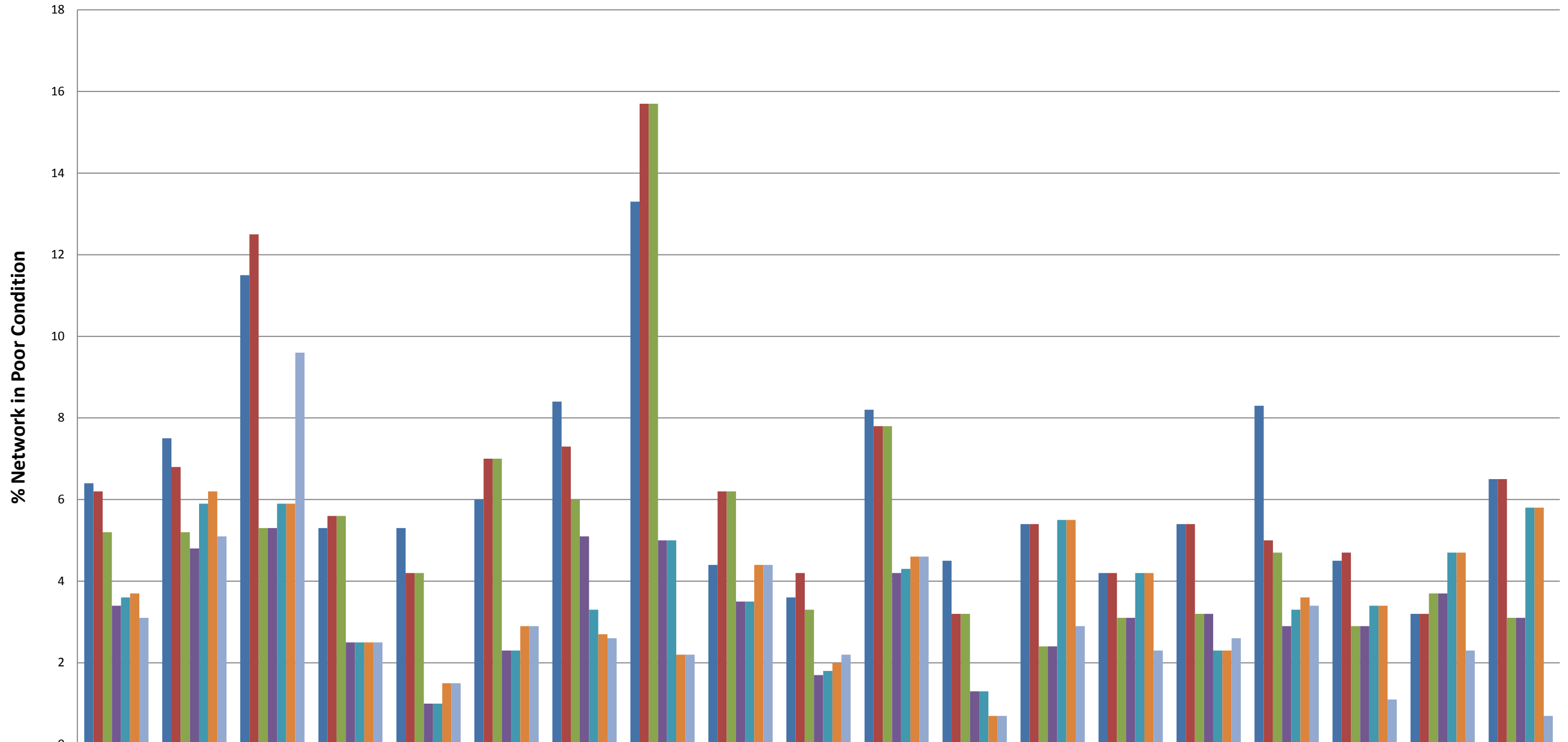
1. **Not Intervention** – the technician has attended site and classified the defect as not meeting intervention levels as per the Highway Inspection Manual 2013 or in the case of streetscene reports, service level agreements.
2. **Duplicate** – a report has already been received in relation to this issue and a works instruction has previously been passed to the contractor to undertake a repair/carry out the necessary works.
3. **Under Investigation** – this issue is currently with a Highways technician or engineer – they may be awaiting information from the customer or the issue requires further investigation e.g. wet weather inspection, drainage survey, exploratory excavation, ownership query.
4. **Discretionary works** – this issue is not a highway safety issue and has been identified as one which falls within the remit of the parish steward scheme.
5. **Other** – the issue has been identified as one which does not require any action by Local Highways. This could be for a number of reasons –
  - the report has been cancelled by the user,
  - there is insufficient information provided to assess the issue and the customer has not provided contact details,
  - the issue is not the responsibility of Wiltshire Council e.g. un-adopted highway, gas/electricity/telephone/water/cable company, Highways England, housing association,
  - the technician attended site and nothing was found at the stated location
  - the issue has been passed to another service within Wiltshire Council e.g. rights of way, bridges.
6. **Works Instructed** – the technician has assessed the issue as requiring works to be carried out and has either dealt with the issue personally or has referred it to the contractor for repair.



Highway defects completed in your area in recent months

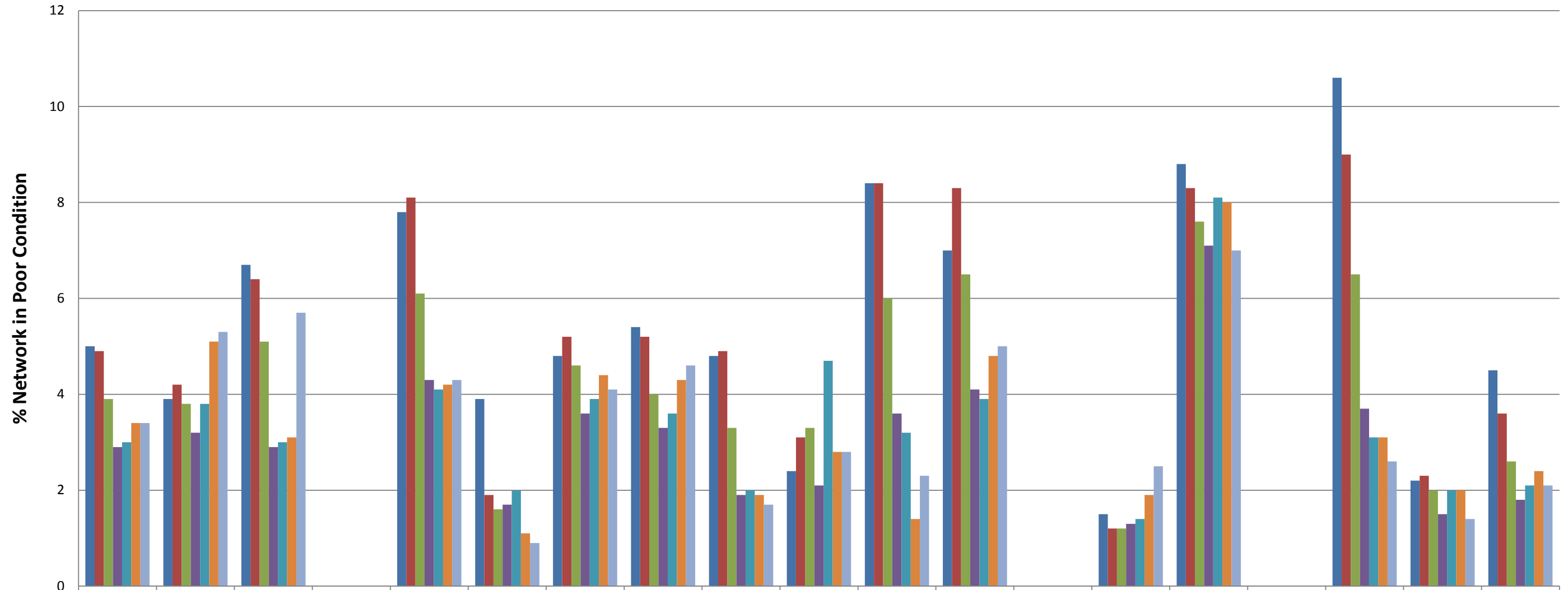


**% A Road Network in Poor Condition**



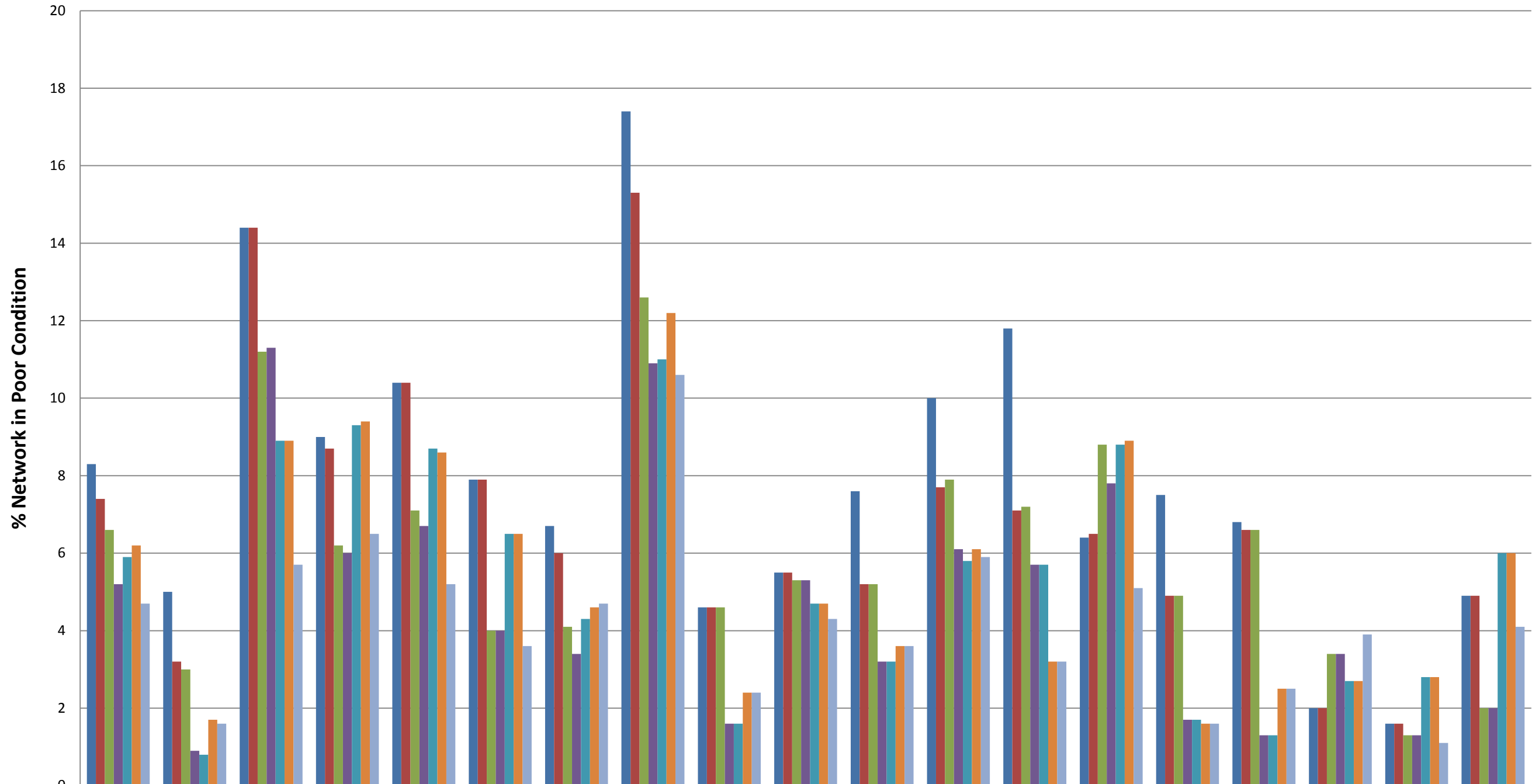
	Wiltshire	Amesbury	Bradford On Avon	Calne	Chippenham	Corsham	Devizes	Malmesbury	Marlborough	Melksham	Pewsey	Royal Wootton Bassett & Cricklade	Salisbury	South West Wiltshire	Southern Wiltshire	Tidworth	Trowbridge	Warminster	Westbury
■ 2009/10	6.4	7.5	11.5	5.3	5.3	6	8.4	13.3	4.4	3.6	8.2	4.5	5.4	4.2	5.4	8.3	4.5	3.2	6.5
■ 2010/11	6.2	6.8	12.5	5.6	4.2	7	7.3	15.7	6.2	4.2	7.8	3.2	5.4	4.2	5.4	5	4.7	3.2	6.5
■ 2011/12	5.2	5.2	5.3	5.6	4.2	7	6	15.7	6.2	3.3	7.8	3.2	2.4	3.1	3.2	4.7	2.9	3.7	3.1
■ 2012/13	3.4	4.8	5.3	2.5	1	2.3	5.1	5	3.5	1.7	4.2	1.3	2.4	3.1	3.2	2.9	2.9	3.7	3.1
■ 2013/14	3.6	5.9	5.9	2.5	1	2.3	3.3	5	3.5	1.8	4.3	1.3	5.5	4.2	2.3	3.3	3.4	4.7	5.8
■ 2014/15	3.7	6.2	5.9	2.5	1.5	2.9	2.7	2.2	4.4	2	4.6	0.7	5.5	4.2	2.3	3.6	3.4	4.7	5.8
■ 2015/16	3.1	5.1	9.6	2.5	1.5	2.9	2.6	2.2	4.4	2.2	4.6	0.7	2.9	2.3	2.6	3.4	1.1	2.3	0.7

### % B Road Network in Poor Condition



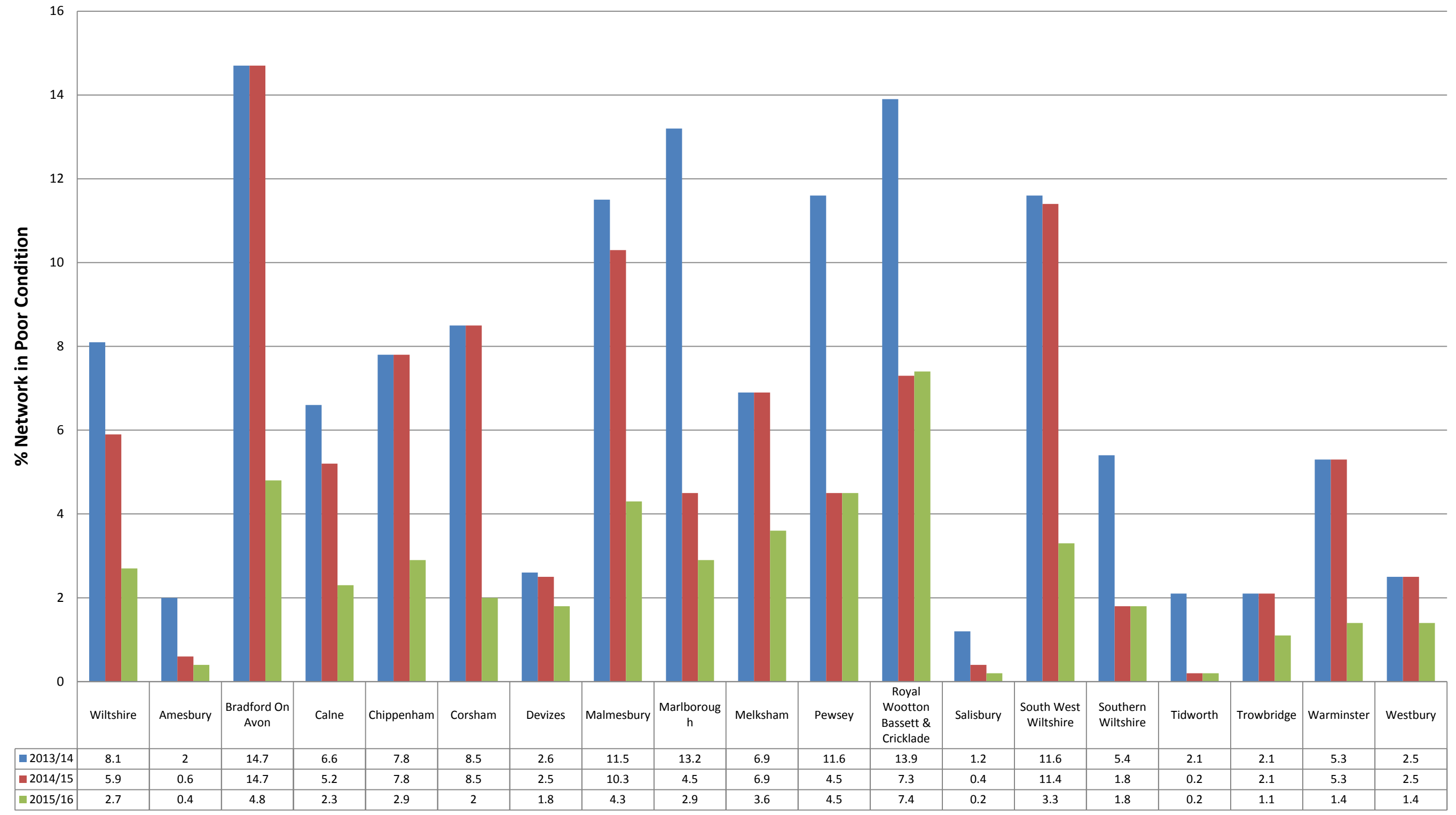
	Wiltshire	Amesbury	Bradford On Avon	Calne	Chippenham	Corsham	Devizes	Malmesbury	Marlborough	Melksham	Pewsey	Royal Wootton Bassett & Cricklade	Salisbury	South West Wiltshire	Southern Wiltshire	Tidworth	Trowbridge	Warminster	Westbury
2009/10	5	3.9	6.7	0	7.8	3.9	4.8	5.4	4.8	2.4	8.4	7	0	1.5	8.8	0	10.6	2.2	4.5
2010/11	4.9	4.2	6.4	0	8.1	1.9	5.2	5.2	4.9	3.1	8.4	8.3	0	1.2	8.3	0	9	2.3	3.6
2011/12	3.9	3.8	5.1	0	6.1	1.6	4.6	4	3.3	3.3	6	6.5	0	1.2	7.6	0	6.5	2	2.6
2012/13	2.9	3.2	2.9	0	4.3	1.7	3.6	3.3	1.9	2.1	3.6	4.1	0	1.3	7.1	0	3.7	1.5	1.8
2013/14	3	3.8	3	0	4.1	2	3.9	3.6	2	4.7	3.2	3.9	0	1.4	8.1	0	3.1	2	2.1
2014/15	3.4	5.1	3.1	0	4.2	1.1	4.4	4.3	1.9	2.8	1.4	4.8	0	1.9	8	0	3.1	2	2.4
2015/16	3.4	5.3	5.7	0	4.3	0.9	4.1	4.6	1.7	2.8	2.3	5	0	2.5	7	0	2.6	1.4	2.1

### % C Road Network in Poor Condition



	Wiltshire	Amesbury	Bradford On Avon	Calne	Chippenham	Corsham	Devizes	Malmesbury	Marlborough	Melksham	Pewsey	Royal Wootton Bassett & Cricklade	Salisbury	South West Wiltshire	Southern Wiltshire	Tidworth	Trowbridge	Warminster	Westbury
2009/10	8.3	5	14.4	9	10.4	7.9	6.7	17.4	4.6	5.5	7.6	10	11.8	6.4	7.5	6.8	2	1.6	4.9
2010/11	7.4	3.2	14.4	8.7	10.4	7.9	6	15.3	4.6	5.5	5.2	7.7	7.1	6.5	4.9	6.6	2	1.6	4.9
2011/12	6.6	3	11.2	6.2	7.1	4	4.1	12.6	4.6	5.3	5.2	7.9	7.2	8.8	4.9	6.6	3.4	1.3	2
2012/13	5.2	0.9	11.3	6	6.7	4	3.4	10.9	1.6	5.3	3.2	6.1	5.7	7.8	1.7	1.3	3.4	1.3	2
2013/14	5.9	0.8	8.9	9.3	8.7	6.5	4.3	11	1.6	4.7	3.2	5.8	5.7	8.8	1.7	1.3	2.7	2.8	6
2014/15	6.2	1.7	8.9	9.4	8.6	6.5	4.6	12.2	2.4	4.7	3.6	6.1	3.2	8.9	1.6	2.5	2.7	2.8	6
2015/16	4.7	1.6	5.7	6.5	5.2	3.6	4.7	10.6	2.4	4.3	3.6	5.9	3.2	5.1	1.6	2.5	3.9	1.1	4.1

### % Unclassified Road Network in Poor Condition



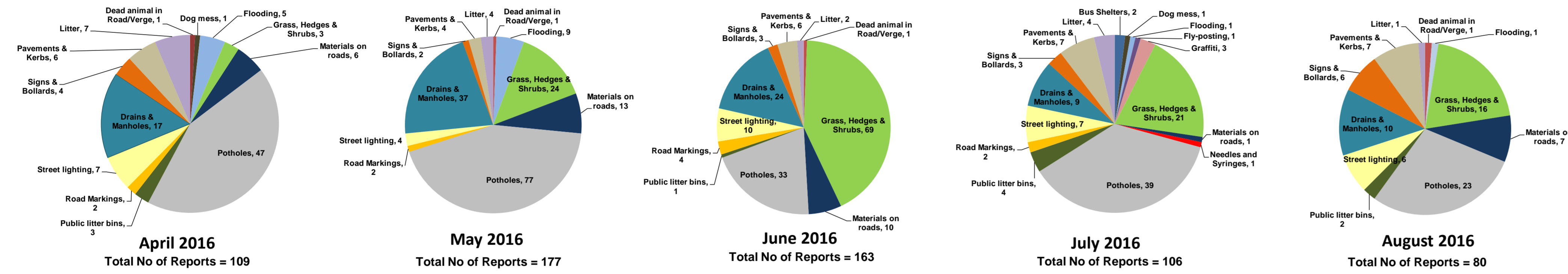
# Appendix B: My Wiltshire Statistics



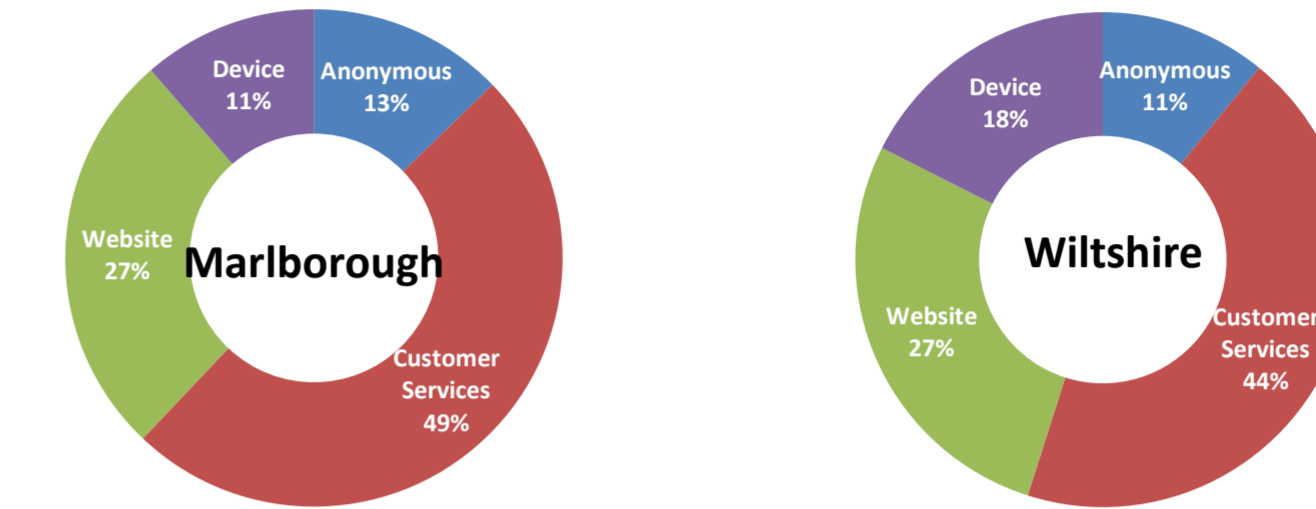
## Marlborough Area Board



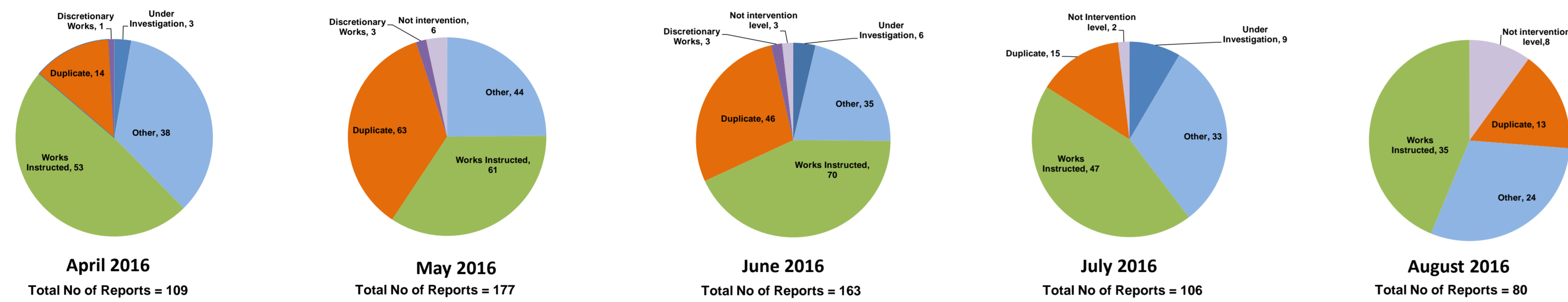
### Customer Reported Issues



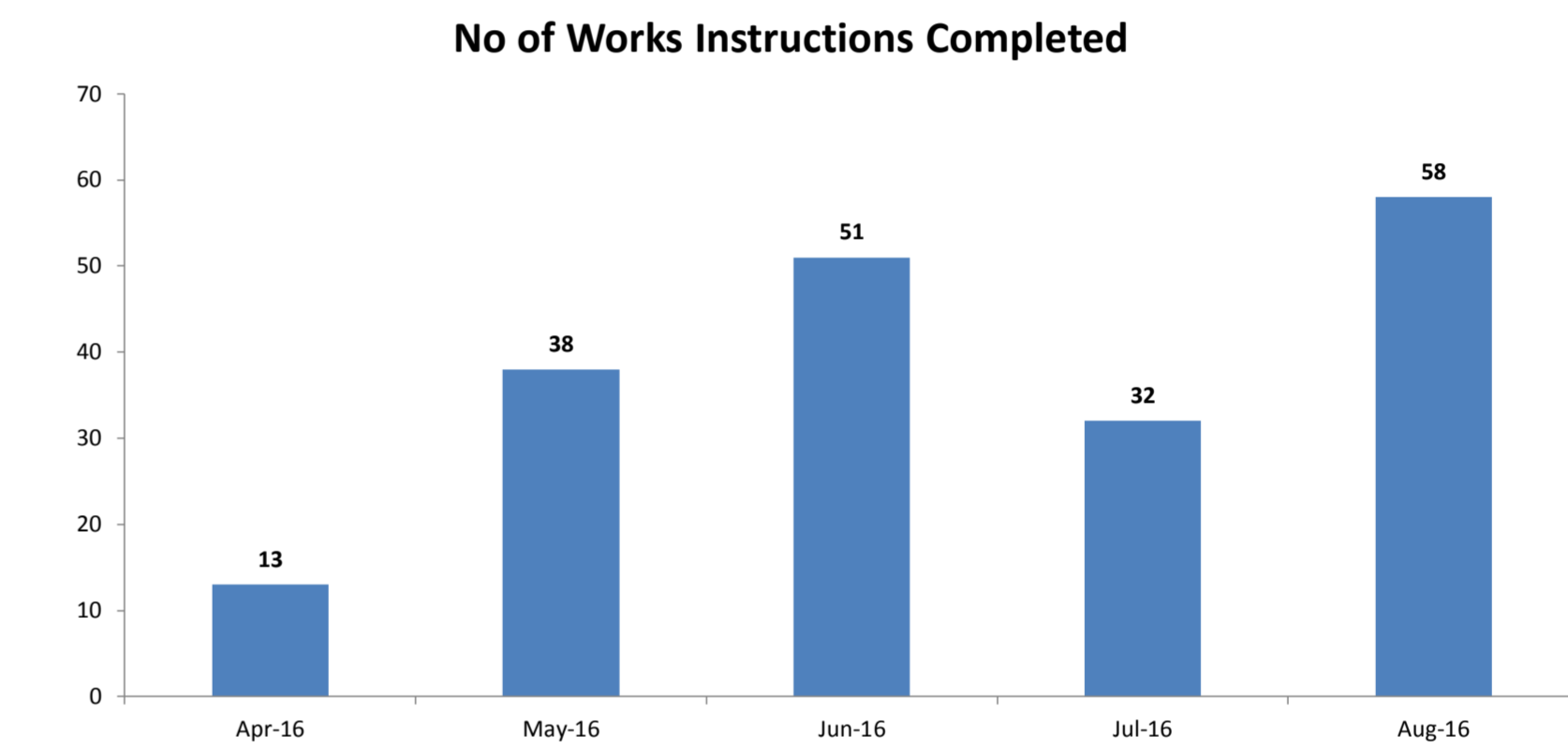
### Reporting Channels



### Customer Call Outcomes



### Completed in Month



### Safety Inspections

